

Wine Bottle Bag Tutorial



By Deb Gehringer
mondaymorningdesigns.com

PDF TUTORIAL

© 2022 Monday Morning Designs All rights reserved. Duplication of any kind is prohibited.

This tutorial may be used for personal purposes only and may not be reproduced without the express written permission from Monday Morning Designs. This tutorial may not be used for commercial purposes.

MATERIALS

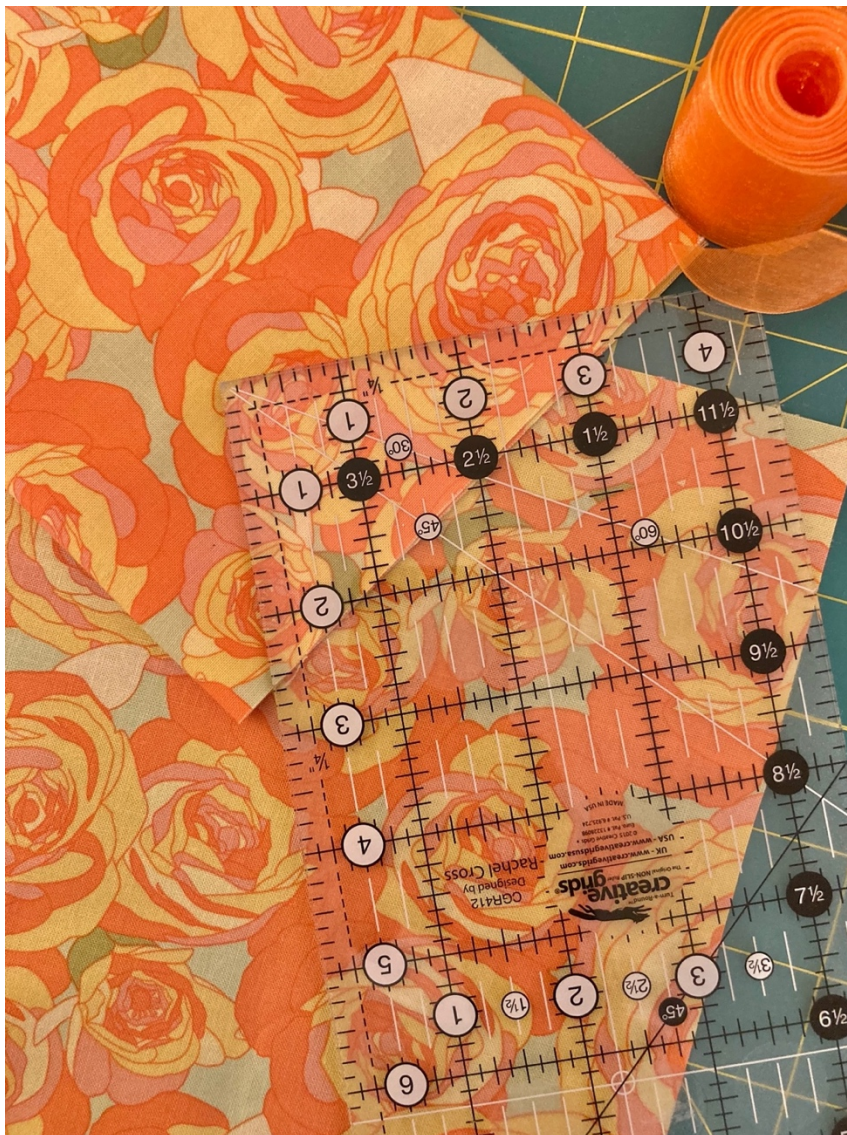
- (1) fat quarter
- (1) ribbon (minimum ½" wide up to 1 ½" wide)
- general sewing supplies

PREPARATION

Cut fat quarter 12" x 20".

Cut a piece of ribbon 24"; if you prefer a longer ribbon add a few more inches to your piece. Ribbons with wire work best for the bow to hold its shape.

TIP: As a cutting alternative use pinking shears or a pinking rotary cutter to keep fabric from fraying.



SEWING THE FABRIC

Fold the ribbon in half and measure 9"-10" down from the top. Place the folded edge of the ribbon between the 9"-10" section of the fabric edge. Pin the ribbon in place.



TIP: To keep the ribbon out of the way while sewing, pin it off to the side.



Next, fold the fabric in half lengthwise.

Pin down the side.

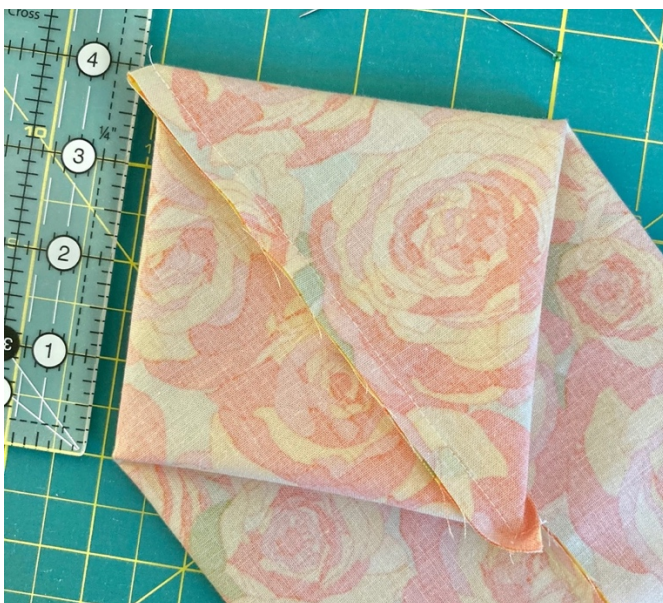
Sew a $\frac{1}{4}$ " seam down the length of the fabric and across the bottom.



If raw edges are straight-cut, run a zig zag stitch along the side and bottom seam edges.

MAKING A BOX BOTTOM

Next, you'll form two triangles at the bottom where you will sew a line from each point. For optimum accuracy, form the bottom into a square. The square will measure 4" x 4".



Measure 1 ¼" from each triangle tip along the seam. Draw a line; pin. Sew on the line.



Once sewn, cut ¼" away from the sewn line then sew a zig zag stitch along the raw edges.

Another option is to skip the trimming and leave the triangles to help strengthen the bottom and to help the box keep its shape.

SEWING THE CUFF

Fold down the top of the bag 4", wrong sides together, to form a cuff. Pin.

Keep the seams positioned in the same direction so the fabric lies flat.



Insert the cuff onto the sewing machine. Sew all the way around $\frac{1}{4}$ " from the folded edge.



Next, sew all the way around the cuff $\frac{1}{4}$ " from the bottom edge.

TO FINISH

Turn the bag inside out, press if necessary.

Place wine bottle inside, tie with a bow and it's ready to gift!
