

How to Make a Quilt Hanging Sleeve



by Deb Gehringer

mondaymorningdesigns.com

© 2023 Monday Morning Designs All rights reserved. Duplication of any kind is prohibited.

This tutorial may be used for personal purposes only and may not be reproduced without the express written permission from Monday Morning Designs. This tutorial may not be used for commercial purposes.

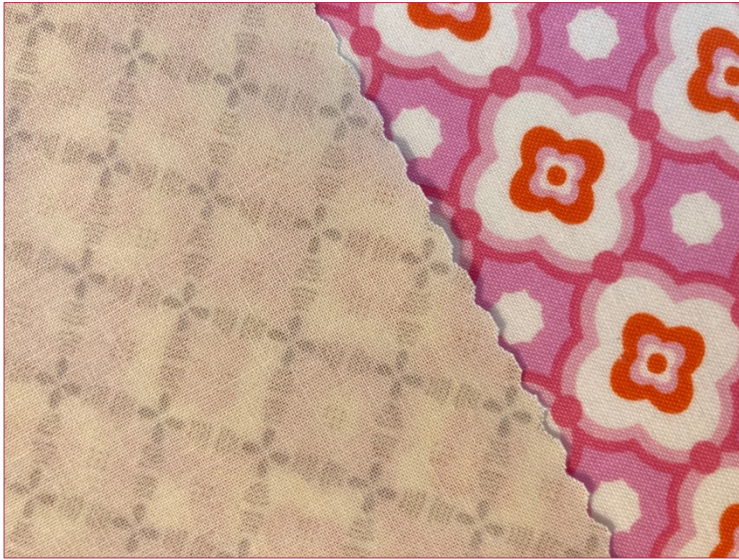
MATERIALS

- (1) piece of fabric - 8" high x width of quilt back from edge to edge (including binding)
- general sewing supplies

TO MAKE

Press fabric, cut to size.

TIP: Use a pinking rotary cutter or pinking shears to keep fabric from fraying.



With the fabric laid out width-wise, fold in short edge $\frac{1}{4}$ ", press.

Fold in again, press and pin.

Repeat on the other side edge.

TIP: Using a hot ruler helps with accuracy.



Stitch about ¼" from the outside fold. It should look like topstitching when finished. Sew both side edges.



Next, press the fabric in half lengthwise.

Open fabric, then fold the top and bottom edges up to the press line. Press edges.



← middle press line on back

Open up pressed edges. Fold wrong sides together, pin.



Sew a $\frac{1}{4}$ " seam, backstitching at each end.

The fabric will be now be a tube.



Turn the tube inside out. Layout the sleeve so you'll be pressing on an existing pressed edge, then press seam open.

NOTE: The slack in the fabric from the seam should be noticeable, as shown.



Now is a good time to iron out the press mark in the center.



ATTACHING THE SLEEVE

Place the sleeve just below the binding with the seam side against the quilt back. The sleeve should be centered within the quilt back. Pin.

Hand-sew along the top edge, making stitches around $\frac{3}{8}$ " in length. Be sure to stitch deep enough into the batting so the stitches can support the quilt weight when hung. No stitches should be visible on the front of the quilt.



With the backside of the sleeve flat, pin the bottom edge. The sleeve will have some slack on the front to allow for a rod to be placed inside.

Hand-sew the bottom edge using the same method as above.



Lastly, place the hanging rod through the sleeve, hang your quilt and enjoy!
